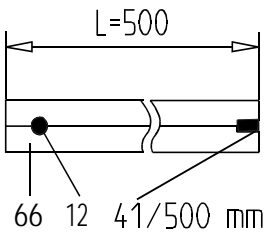
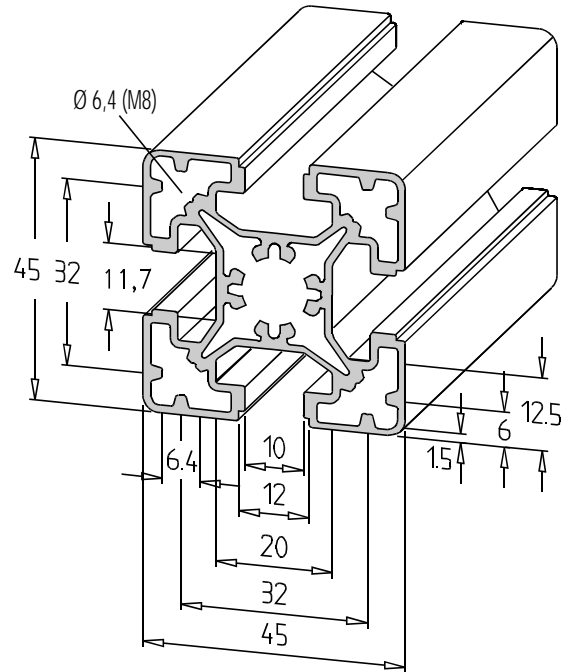


45 x 45 L



	10 x 6000 mm			66 00 00/6000 mm
	1 x 6000 mm			66 00 01/6000 mm
		□		66 02 02/..... mm
		■		66 12 02/..... mm
		■		66 12 12/..... mm
	M8x20	□		66 41 02/..... mm
	M8x20	□	M8x20	66 41 41/..... mm
	M14x100	□		66 47 02/..... mm
	M14x100	□	M14x100	66 47 47/..... mm
	M8x20	□	■	66 41 12/..... mm
	M14x100	□	■	66 47 12/..... mm
	45°	■		66 32 02/..... mm
	45°	■	45°	66 32 32/..... mm

Nach Bearbeitungsliste Seite 3.0.5–3.0.6 bzw. nach Ihrer Skizze

Compare outline of end finishing page 3.0.5–3.0.6, res. according to your own sketch

Selon sommaire de usinage des extrémités page 3.0.5–3.0.6, ou bien votre propre dessin

Conforme a la tabella de la lavorazione delle estremita pagina 3.0.5–3.0.6, rispett. schizzo costruttivo

Ver listo de mecanizar los extremos pag. 3.0.5–3.0.6, o bien segun un esbozo de Ud.